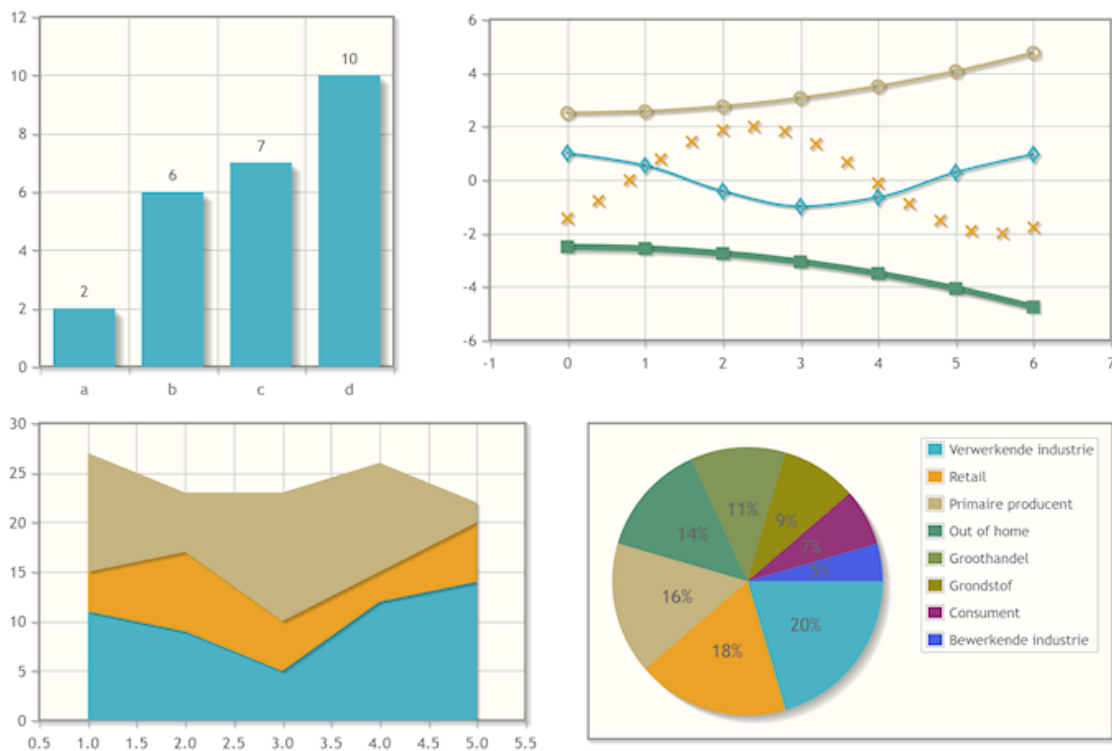


jqPlot

jqPlot is a plotting and charting plugin for the jQuery Javascript framework. jqPlot produces beautiful line, bar and pie charts with many features (<http://www.jqplot.com/>). This extension helps you to add jqPlot charts to your website without writing any code! The data for the charts can be loaded from different data sources (MYSQL, CSV, JSON, MDB).

Features

- Area, Bar, Column, Line, Stacked, Pie and Donut charts.
- Options for zoom, animation, shadow, point labels.
- Support multiple line plots in one chart, with different styles, markers, line width etc.
- Load data from MySQL, CSV, MS Access (MDB) or JSON
- Many styling options



Important note:

This extension requires PHP, so you will need to set the page file extension (in Page Properties) to PHP!

Datasource

Specifies the data source of the chart.

CSV (local)

Load data from a CSV file on your computer. The data will be embedded into the page during publishing. To update the chart after making modifications to the CSV file you must republish the page.

This option does not require any additional setup on the server side.

Example CSV data, where the first column is the x-axis (page), the 2nd column is the first dataset (total hits) and the 3rd column is the second dataset (unique hits).

```
index.html, 20, 12
about.html, 25, 18
contact.html, 15, 8
services.html, 10, 2
```

- **CSV (online)**

Load data from a CSV file on the server. The file must already exist on the server; it will not be created by this extension! This option can be useful if you want to update the data from another location without access to the WYSIWYG Web Builder project. The file will be reloaded each time you visit the page, so the chart will always be up-to-date. The file must be on the same domain.

- **MySQL (online)**

This will load data from a MySQL table on the server. The data will be reloaded each time you visit the page, so the chart will always be up-to-date.

In **MySQL Filter** you can specify an optional filter for the data. Basically, this is the 'WHERE' statement of the SQL query.

Example MySQL structure data, where 'page' is the x-axis (varchar), 'total_hits' is the first dataset (int) and the 'unique_hits' is the second dataset (int).

	#	Name	Type	Collation	Attributes	Null	Default	Comments	Extra
<input type="checkbox"/>	1	id	int(6)		UNSIGNED	No	None		AUTO_INCREMENT
<input type="checkbox"/>	2	page	varchar (128)	utf8_unicode_ci		No			
<input type="checkbox"/>	3	total_hits	int(10)		UNSIGNED	No	1		
<input type="checkbox"/>	4	unique_hits	int(10)		UNSIGNED	No	1		

- **MS Access Database (local)**

This will load data from a MS Access database file on your computer.

This data will be embedded into the page during publishing. To update the chart after making modifications to the database you must republish the page.

- **JSON**

This loads JSON data from a file (or script) on the server.

Example JSON data:

```
[
  {"page": "index.html", "total": "20", "unique": "12"},
  {"page": "about.html", "total": "25", "unique": "18"},
  {"page": "contact.html", "total": "15", "unique": "8"},
  {"page": "services.html", "total": "10", "unique": "2"},
  {"page": "blog.html", "total": "17", "unique": "11"}
]
```

Column (x-axis)

Specifies the column that will be used for the x-axis of the chart.

Important note:

For MySQL and JSON, this should be the column name (string).

For CSV and MS Access, this should be the column index (number). This number is zero-based, so the first column is '0'.

Data on the x-axis is normally **text**.

Data sets

The jqPlot extension supports up to 5 datasets.

For each dataset you can configure the following options:

Legend

Specifies the text which will be used for legend in the chart.

Column (y-axis)

Specifies the column that will be used for the y-axis of the chart.

For MySQL and JSON, this should be the column name (string).

For CSV and MS Access, this should be the column index (number). This number is zero-based, so the first column is '0'.

Data on the y-axis must be a **number**.

Fill Color

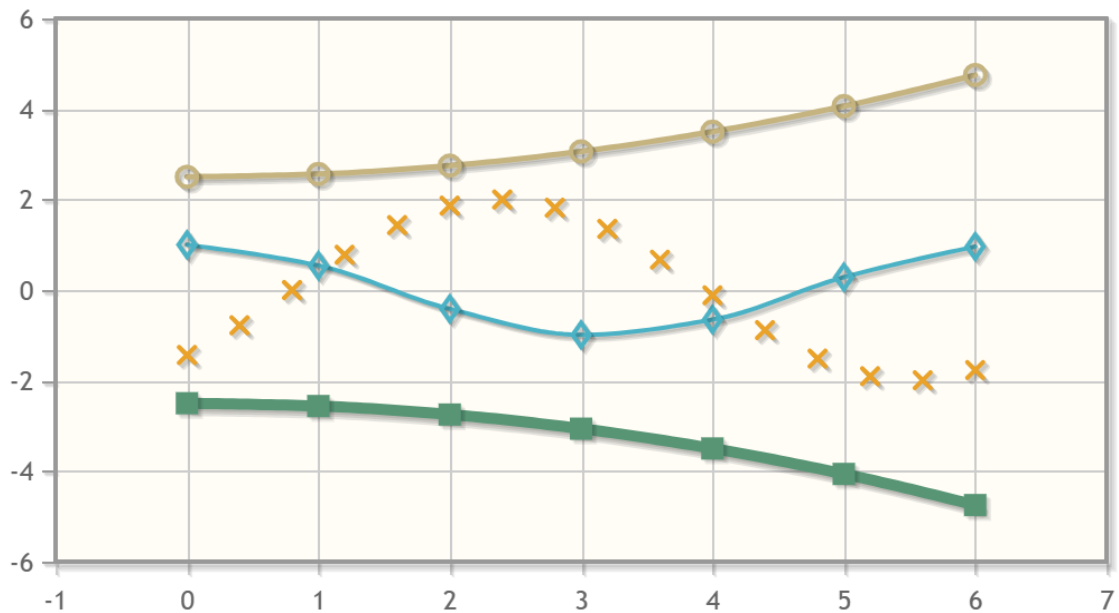
Specifies the fill color of the chart.

Alpha

Specifies the alpha value of the fill color to make the background semi-transparent.

The following options only apply to line charts, it allows you to set different line properties for datasets.

For example:

**Line width**

Specifies the line width. Set to '0' to only show markers.

Line style

Specifies the style of the line: solid, dashed or dotted.

Marker style

Specifies the style of the marker: none, circle, diamond or square.

Marker size

Specifies the size of the marker.

Notes for Pie chart:

- Pie chart only supports 1 data set.
- Multiple color variations will automatically be generated based on the selected color.
- It is also possible to configure the slice colors manually. Just add multiple datasets, where the color property will be used for each slice. The other properties of the dataset will be ignored.

Title

Specifies a title for the chart.

Horizontal axis title

Specifies the title of the horizontal axis.

Vertical axis title

Specifies the title of the vertical axis.

Full Width

Specifies whether the image should be full width (responsive) when used inside a layout grid. If set to false, the image will have a fixed size.

Chart type

The following chart types are supporting:

- Area
- Bar
- Columns (including stacked columns and waterfall mode)
- Line (including curved lines and markers)
- Pie (including donuts)

Stacked

Specifies whether the columns or bars are stacked.

- **false** — elements will not stack.
- **true** — stacks elements for all series at each domain value.

Point Shape

Specifies the shape of (line chart) data points. 'circle', 'cross', 'crossRot', 'dash', 'line', 'rect', 'rectRounded', 'rectRot', 'star' and 'triangle'.

Point Size

Specifies the size of (line chart) data points.

Line Width

Specifies the line width.

Curve Type

Controls the curve of the lines when the line width is not zero. Can be one of the following:

- **flat** - Straight lines without curve.
- **curve** - The angles of the line will be smoothed.

Donut (for Pie chart only)

Specifies whether to render a donut chart.

Slice Margin (for Pie chart only)

Specifies the gap between pie slices.

Waterfall

Enables waterfall mode for column charts.

Shadow

Specifies whether to render shadows behind values.

Zoom

Enables zoom functionality.

Cursor

Renders a crosshair cursor. May be useful in combination with the zoom option.

Font family

Specifies the font family for text on the chart.

Font size

Specifies the font size for text on the chart.

Background color

Specifies the background color.

Text color

Specifies the color of the text in the charts.

Grid

Set the color, line width, background and border of the chart's grid.

Title properties

Specifies the position and style of the title.

Border properties

Specifies the style of the border of the chart.

Legend

Specifies the position and style of the legend.

Animation

Determines if the chart will animate on the initial draw.

How to install this extension so it is available in WYSIWYG Web Builder?

You can use the Extension Manager (Menu->Tools->Extension Manager) to install this extension.

Alternatively, you can manually copy all files from the zip file to the Web Builder extensions folder. Usually this folder is in this location:

My Documents\WYSIWYG Web Builder\system\extensions\

Requirements

WYSIWYG Web Builder 15.0 or higher

License Agreement

This is a commercial extension for WYSIWYG Web Builder.

This extension is NOT FREE! To use it on your website you will need to buy a license:

<https://www.wysiwygwebbuilder.com/jsplot.html>

This application may not be sold, rented, redistributed, sublicensed or modified without permission of the author. This application is provided "AS IS" without warranty of any kind including, but not limited to, warranties of merchantability, fitness for a particular purpose and non-infringement. In no event will Pablo Software Solutions be liable for any direct, indirect, incidental, special, exemplary or consequential damages, including damages for loss of profits, loss or inaccuracy of data, incurred by any person from such person's usage of this application if advised of the possibility of such damages.

This extension was created by Pablo.

Copyright 2023 WYSIWYG Web Builder

<https://www.wysiwygwebbuilder.com>